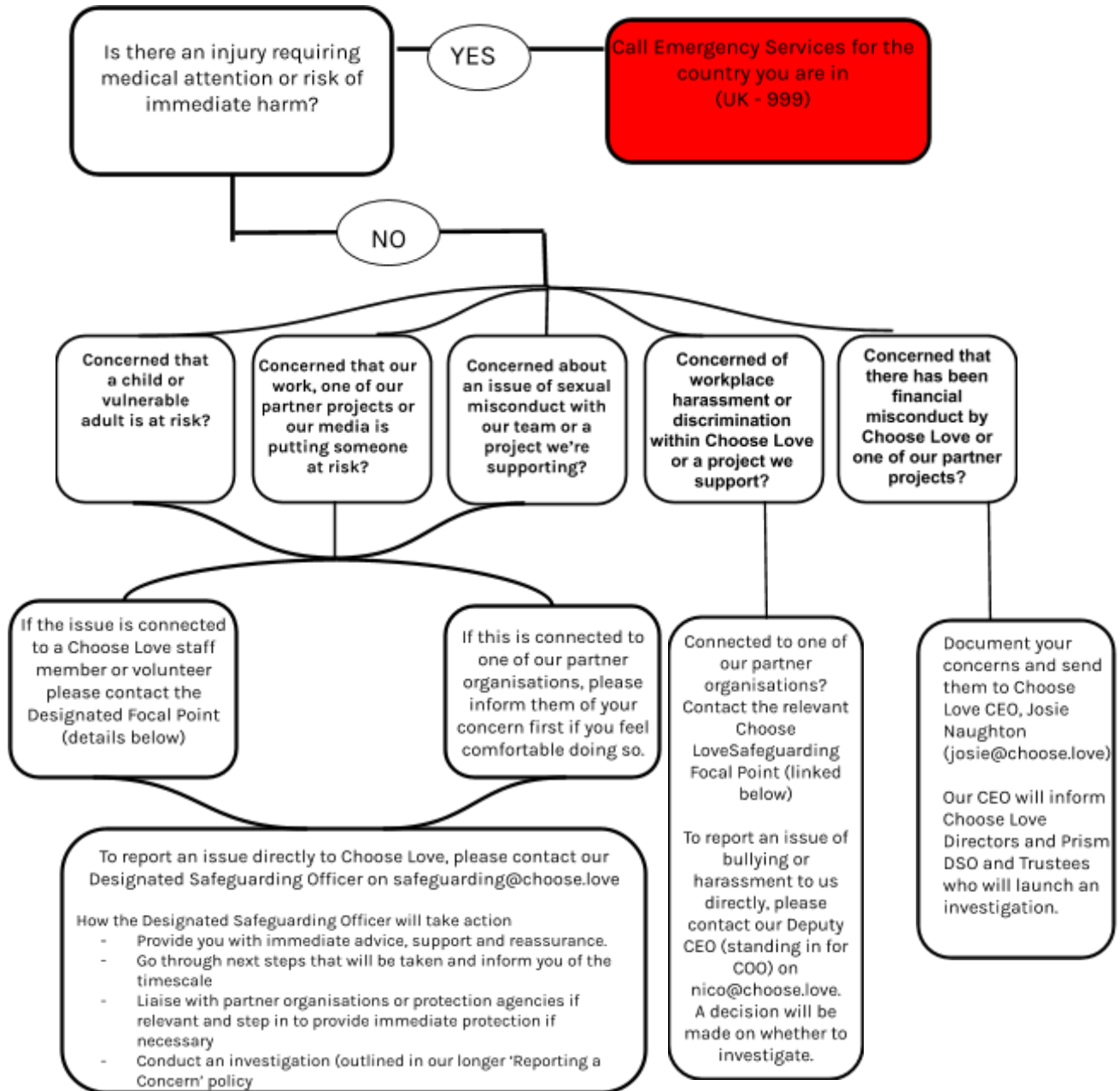


## Choose Love - Reporting Flowchart



For more detailed information about these reporting routes, including the process for investigations, which staff members will be involved and timescales for responses, please read our full 'Raising a Concern' document.

For any issue that does not require an immediate call to emergency services, a report must be made to the Designated Safeguarding Officer or Designated Country Focal Point, so a joint decision can be made for action.

### Our Designated Safeguarding Officer can be contacted via [safeguarding@choose.love](mailto:safeguarding@choose.love)

Name	Location	Contact Details
Ellen Ackroyd	France	<a href="mailto:ellen@choose.love">ellen@choose.love</a>
Farah Al Haddad	Middle East	<a href="mailto:farah@choose.love">farah@choose.love</a>
Matty Gladstone	UK/Mexico/Balkans/Italy/Spain	<a href="mailto:matty@choose.love">matty@choose.love</a>
Freya Mergler	Greece	<a href="mailto:freya@choose.love">freya@choose.love</a>